



**stornoway**  
DIAMOND CORPORATION

## **The Renard 2 Kimberlite Expansion Resulting from the 2009 Drill Program**

*\*as described in the October 6, 2009 press release*

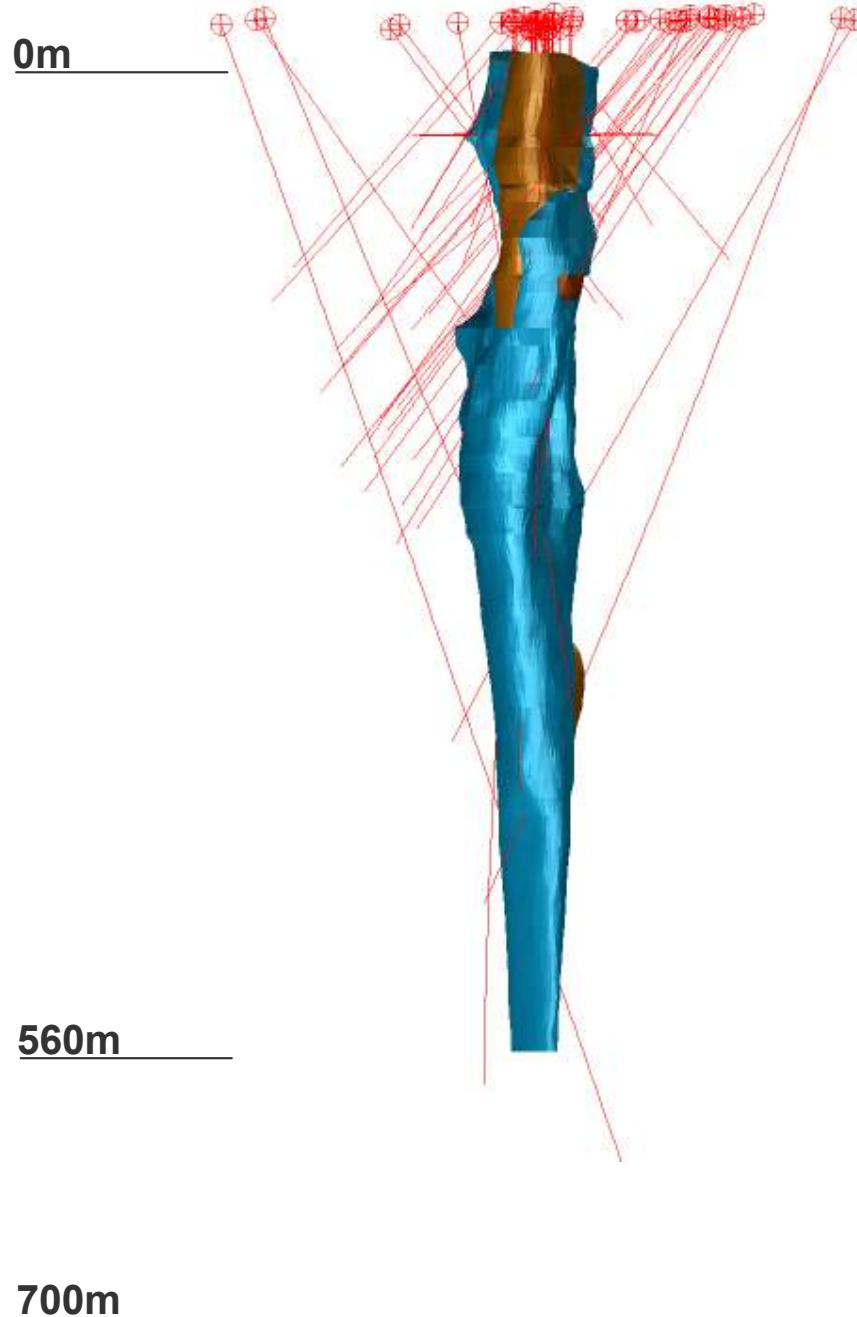
# Renard 2 Resources and Latest Geological Modelling

As of October 06, 2009



**Dec 2008**

3.4mt Ind. at 81cpht  
1.8mt Inf. at 86cpht  
(to 560m)



	Predominantly Kimb2a (Blue)
	Predominantly Kimb2b (Brown)
	Cracked Country Rock
	Country Rock Breccia

# Renard 2 Resources and Latest Geological Modelling

As of October 06, 2009



## Dec 2008

3.4mt Ind. at 81cpht  
1.8mt Inf. at 86cpht  
(to 560m)



## Oct 2009

14.8 to 17.8 mt  
additional "Potential  
Mineral Deposit"  
(to 700m)

0m

560m

700m



# Renard 2 Resources and Latest Geological Modelling

As of October 06, 2009



## Dec 2008

3.4mt Ind. at 81cpht  
1.8mt Inf. at 86cpht  
(to 560m)



## Oct 2009

14.8 to 17.8 mt  
additional "Potential  
Mineral Deposit"  
(to 700m)

0m

560m

700m



# Renard 2 Resources and Latest Geological Modelling

As of October 06, 2009



## Dec 2008

3.4mt Ind. at 81cpht  
1.8mt Inf. at 86cpht  
(to 560m)



## Oct 2009

14.8 to 17.8 mt  
additional "Potential  
Mineral Deposit"  
(to 700m)

0m

560m

700m



-  Predominantly Kimb2a (Blue)
-  Predominantly Kimb2b (Brown)
-  Cracked Country Rock
-  Country Rock Breccia

# Renard 2 Resources and Latest Geological Modelling

As of October 06, 2009



## Dec 2008

3.4mt Ind. at 81cpht  
1.8mt Inf. at 86cpht  
(to 560m)



## Oct 2009

14.8 to 17.8 mt  
additional "Potential  
Mineral Deposit"  
(to 700m)



## Q4 2009

Revised  
Resource  
Statement



## Q1 2010

Revised Preliminary  
Economic  
Assessment

0m



560m

700m

